

**M10L**  
THINK BIGGER



**M10L**  
THINK BIGGER





**M10L**  
THINK BIGGER

# M10L



## KEY SELLING POINTS



10.1" FULL HD+ 1080P  
CURVED GLASS DISPLAY



8MP MAIN CAMERA + LED FLASH  
5MP SELFIE CAMERA



1.6GHZ OCTA-CORE  
PROCESSOR | 64 BIT



64GB INTERNAL MEMORY  
4GB RAM



6,000MAH MEGA BATTERY  
TYPE C CHARGER



PREMIUM METAL  
HOUSING



ANDROID 11



# M10L

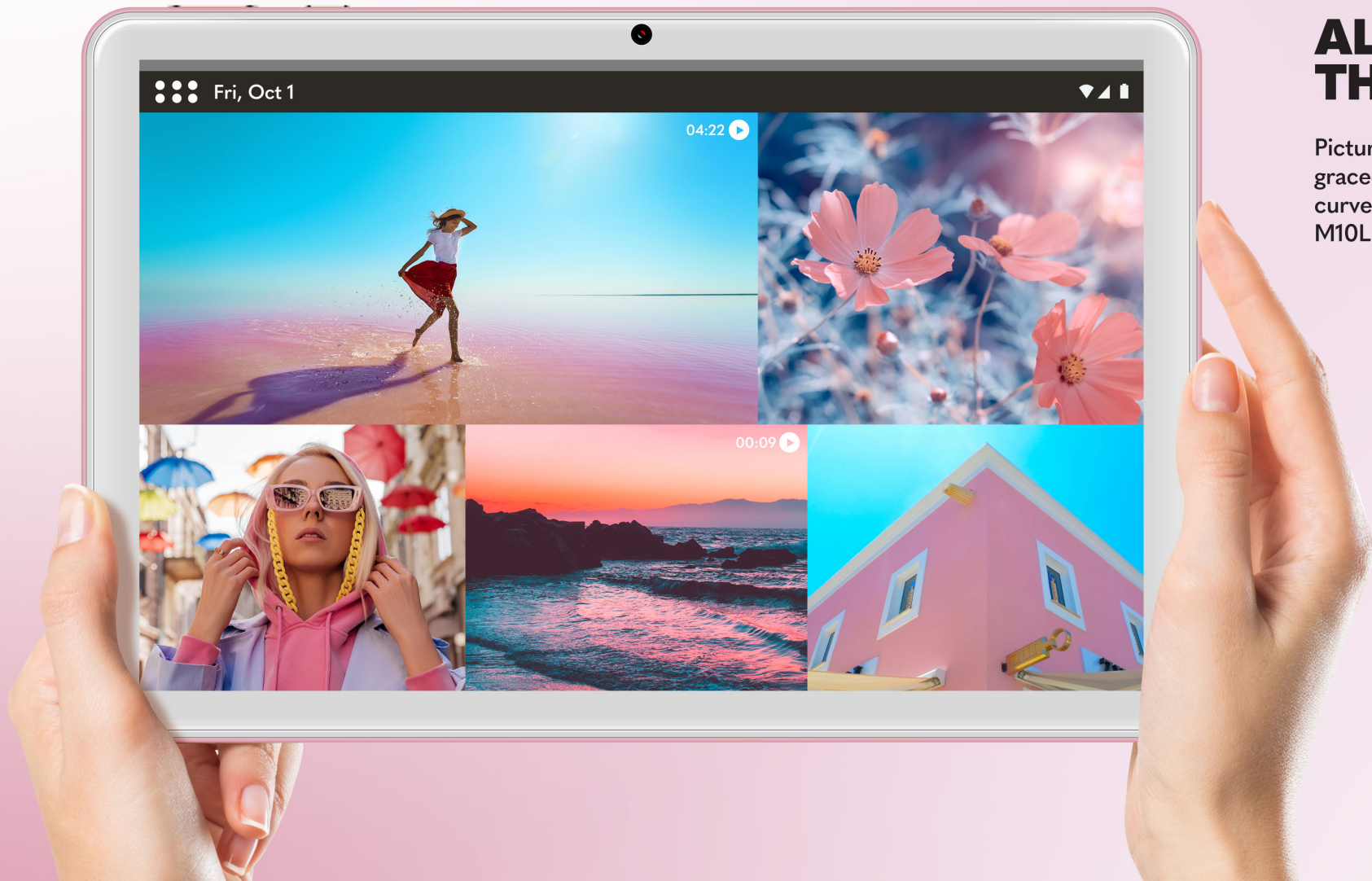
## GORGEOUS

Introducing the all new 10" premium tablet from BLU, the M10L. Enclosed in a premium metal housing with powder coated paint finish along with pristine curved glass display for a perfect execution that is bar none.

Available in Grey and Rose Gold.



# M10L



## ALL ABOUT THE CURVE

Picture perfect FULL HD+ display graced with the most elegant 2.5D curved glass that elevates the M10L to another level.

M10L

FIRE IT UP

Octa-Core power with 1.6GHz speed that will make your life seamless. Work related emails or browsing the internet for fun nothing slow you down.



Susan Miller



Before Bed

Android's "Bedtime" mode, previously known as "Wind Down," uses Do Not Disturb to silence calls, texts and notifications, while gray-



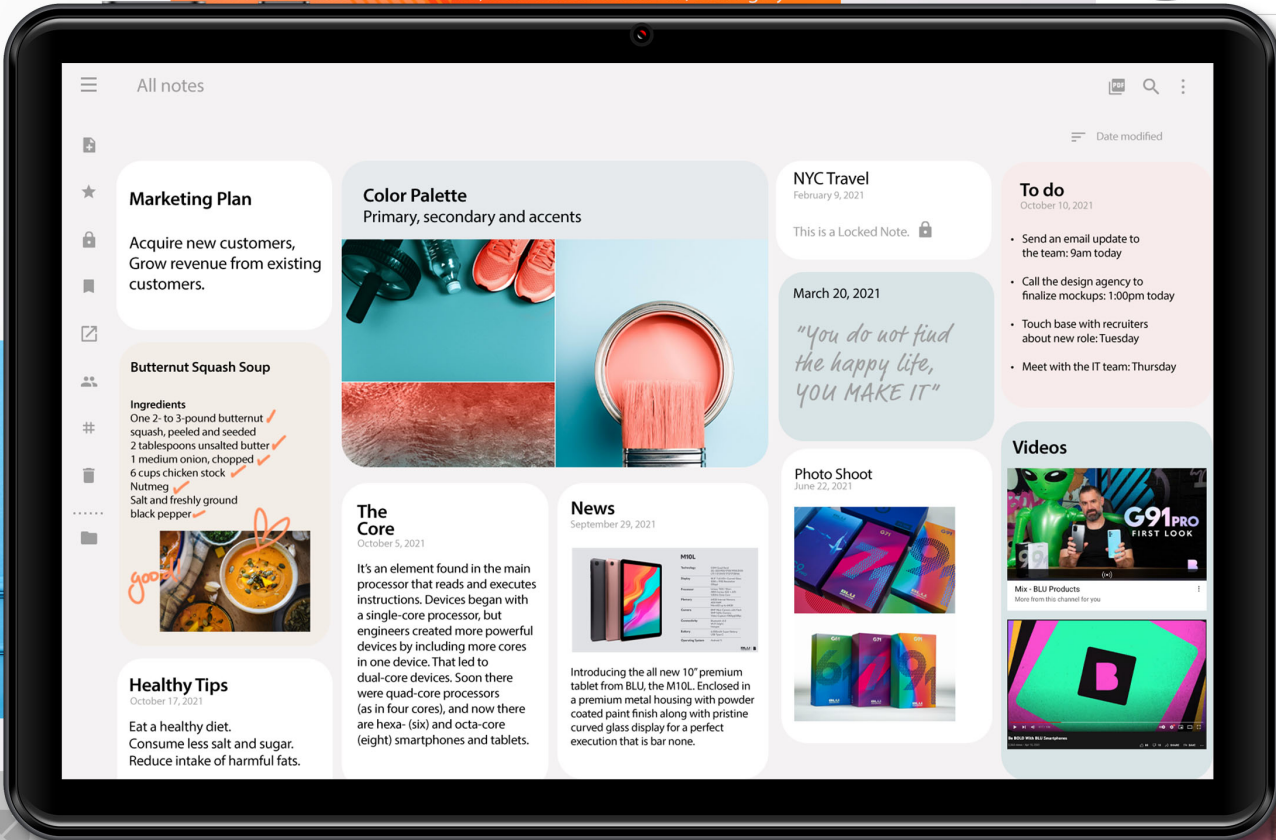
Noah Smith

Hey how are you?? off course we can talk tomorrow about it

Thank you for your message! We will get back to you within 24 hours. Regards, the BLU Team.

Here, how can I help you?   
 Be aware that we may answer less fast than usual in these expedited times.

Are you still available?   
 Please let us know.





# M10L



## MOMENTS

Capture all your favorite memories with 8 Megapixel main camera and 5 Megapixel selfie. Live life to the fullest.



8MP MAIN CAMERA



5MP SELFIE CAMERA



# M10L



## ALWAYS CHARGED

With 6,000mAh battery on standby you can be sure the M10L will fire up the second you pick it up.

# M10L

# RUGGED CASE



COOLING VENTS

SHOCK PROOF

ERGONOMIC GRIP

## ANDROID 11



FAMILY LINKS



SMART REPLY



SOUND  
AMPLIFIER



DARK THEME



PRIVACY  
CONTROLS



LOCATION  
CONTROLS



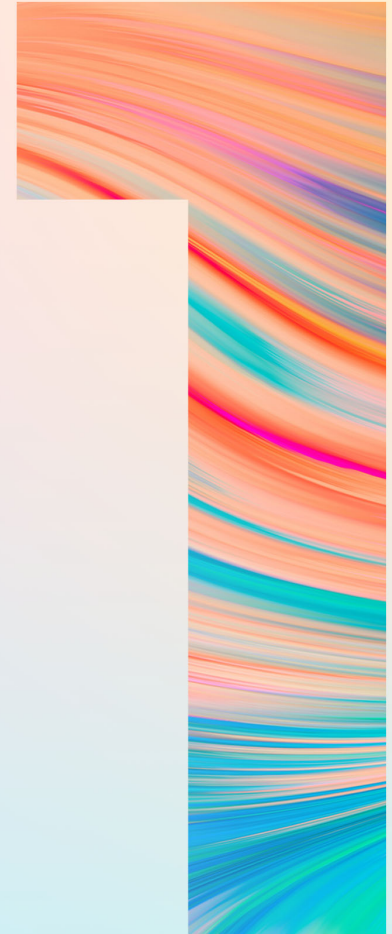
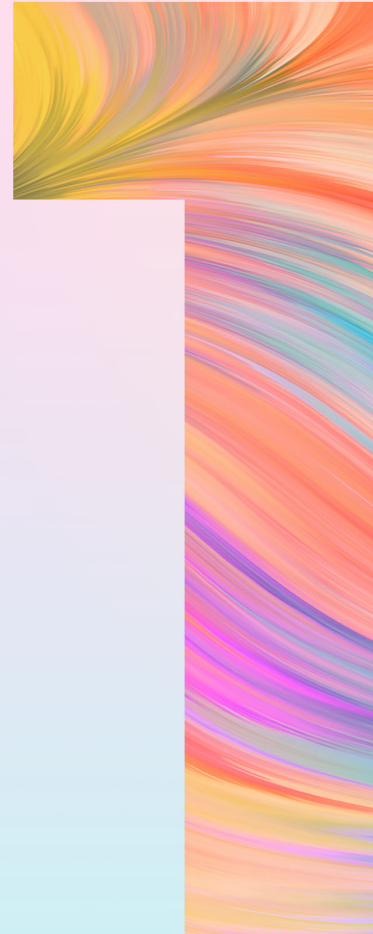
FOCUS MODE



GESTURE  
NAVIGATION



SECURITY  
UPDATES

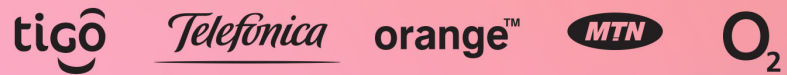




# M10L

## GLOBALLY CONNECTED & DUAL SIM

Stay globally connected with friends and family while traveling the world. The **M10L** comes with 4G LTE: 2/3/4/5/7/12/17/28/66 that ensures you always have access to worldwide carrier coverage while you are on the go! Take advantage of different voice and data plans to get better rates, better coverage and separate bills with the **M10L** Dual SIM slots.





# M10L



M10L	848958041054	M0190WW	Gray
M10L	848958041061	M0190WW	Rose Gold

Technology	GSM Quad Band 3G: 850/900/1700/1900/2100 LTE 2/3/4/5/7/12/17/28/66
Display	10.1" Full HD+ Curved Glass 1200 x 1920 Resolution 226ppi
Processor	Unisoc 9863   28nm ARM Cortex-A55 1.6GHz Octa Core
Memory	64GB Internal Memory 4GB RAM MicroSD up to 64GB
Camera	8MP Main Camera with Flash 5MP Selfie Camera Video Capture 1080p@30fps
Connectivity	Bluetooth v5.0 Wi-Fi (b/g/n) Hotspot
Battery	6,000mAh Super Battery USB Type-C
Operating System	Android 11

# M10L



**BLU M10L**

244 X 160 X 9.7mm | 557g  
10" Full HD+ Curved Glass Display  
1200 X 1920 Resolution | 226ppi  
1.6GHZ Octa-Core Processor  
64GB Internal Memory | 4GB RAM  
8MP + LED Flash  
5MP Selfie  
6,000mAh Battery  
+ Type C Charger  
Android 11

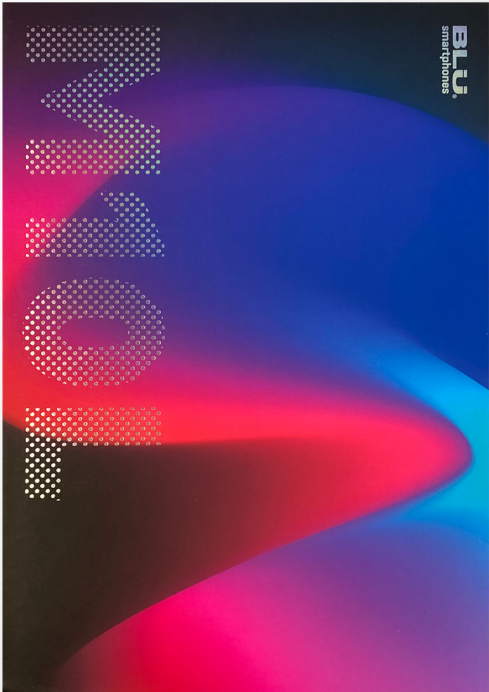


**SAMSUNG GALAXY TAB S6 LITE**

244.5 x 154.3 x 7mm | 467g  
10" Full HD+ Display  
1200 X 2000 Resolution | 233ppi  
2.0GHZ Octa-Core Processor  
64GB Internal Memory | 4GB RAM  
8MP + LED Flash  
5MP Selfie  
7,040mAh Battery  
+ Type C Charger  
Android 11

# M10L

BOX



TABLET



RUGGED CASE



QUICK GUIDE



STICKER



CHARGER



TYPE C CABLE

